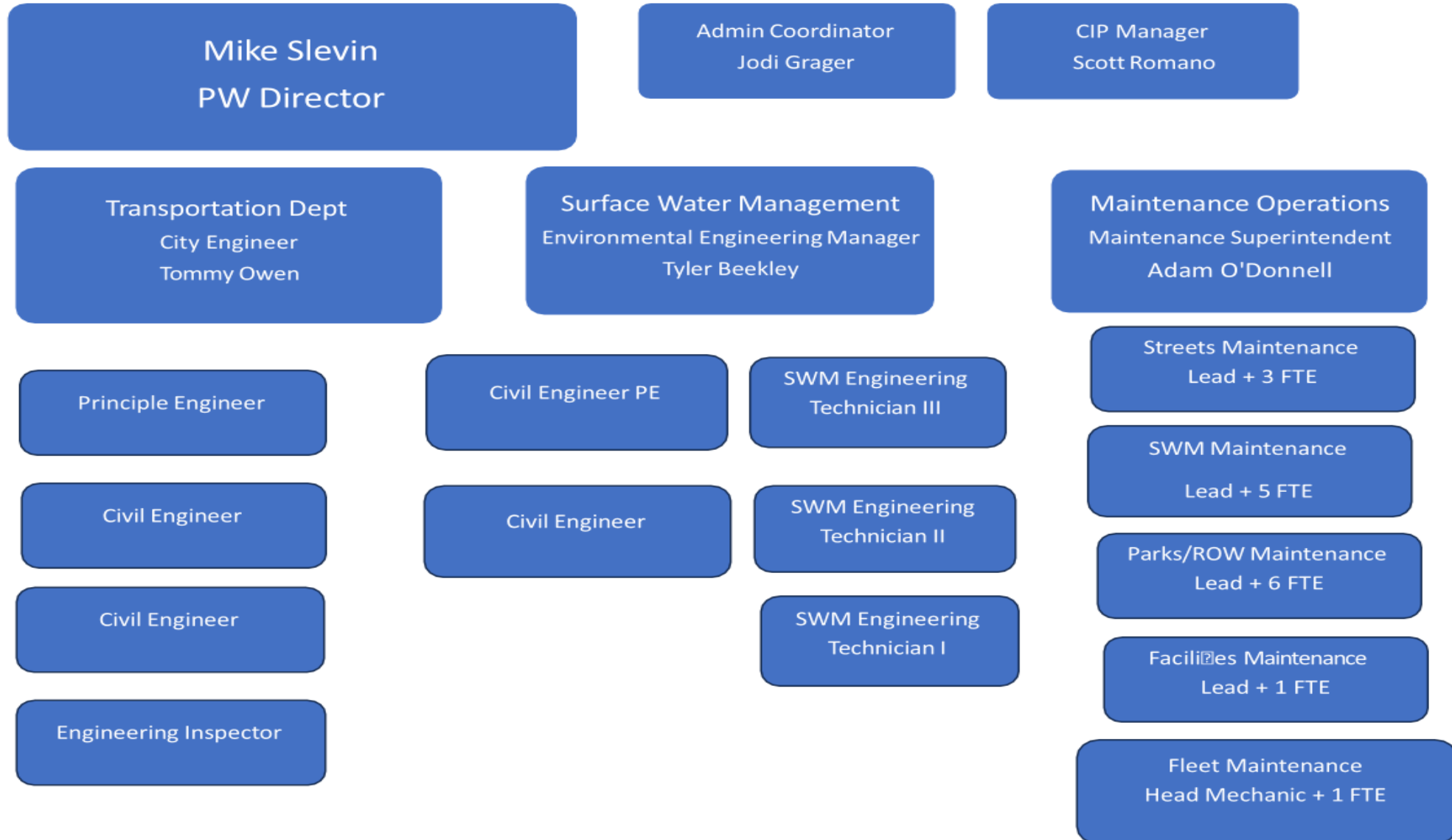


PUBLIC WORKS STATUS BRIEF

CITY OF DES MOINES



Public Works Organizational Chart - 2025



2024 ACCOMPLISHMENTS

- Completion of Sound Transit Federal Way Link Extension (FWLE) improvements (Pacific Ridge, College Way)
- Coordinated with partners to install speed cameras in Redondo
- Completed most extensive pavement overlay project ever by the City
- Coordinated with WSDOT SR 509 team to reconstruct 216th Street bridge over I-5 and improve Barnes Creek Trail within historic SR 509 right-of-way
- Reviewed 206 development permits and 228 Right-of-Way Permits
- Reviewed 97 development project plans for compliance with drainage code

2024 ACCOMPLISHMENTS

- The construction of the Kent Des Moines/16th Ave S Pipe Replacement project
- Secured a King County Flood Control District Grant to support the Redondo 287th/6th Pipe Replacement Project
- Response to weather events King Tides, Snow Plowing, and Windstorms
- Surplused 16 old vehicles and replaced with 20 new including 13 Police cars
- Filled numerous potholes/ gravel road maintenance/crack sealing/street sign repair

2025 GOALS

- Redesign, bid, and construction of Bonded Capital Improvement Projects by end of 2026, including Redondo Pier, Des Moines Marina Steps, and Memorial Triangle
- Complete 24th Avenue project and Field House Park
- Develop a Geographic Information System (GIS) based real time Public Works webpage for project tracking and public requests
- Traffic calming project pilot
- New onboarding and training standards for Public Works Department Operations
- Create maintenance master plans for fleet and facilities based on life cycle costs

2025 GOALS

- Identify park asset improvements to reduce maintenance costs (turf fields)
- Refine the Surface Water Management (SWM) rate/budget model
- Develop tree canopy program transitioning city-owned open space areas to SWM with offsetting corresponding rate increase
- Improve coordination with utility districts by creating Utility Engineer position
- Complete the Des Moines Creek Estuary 30% design and seek additional grants for full design and construction



QUESTIONS?