

DRY STACK BOAT STORAGE

- Existing Conditions
- Trends in Recreational Boating
- Master Plan Process
- Options for Dry Stack Storage
- Discussion

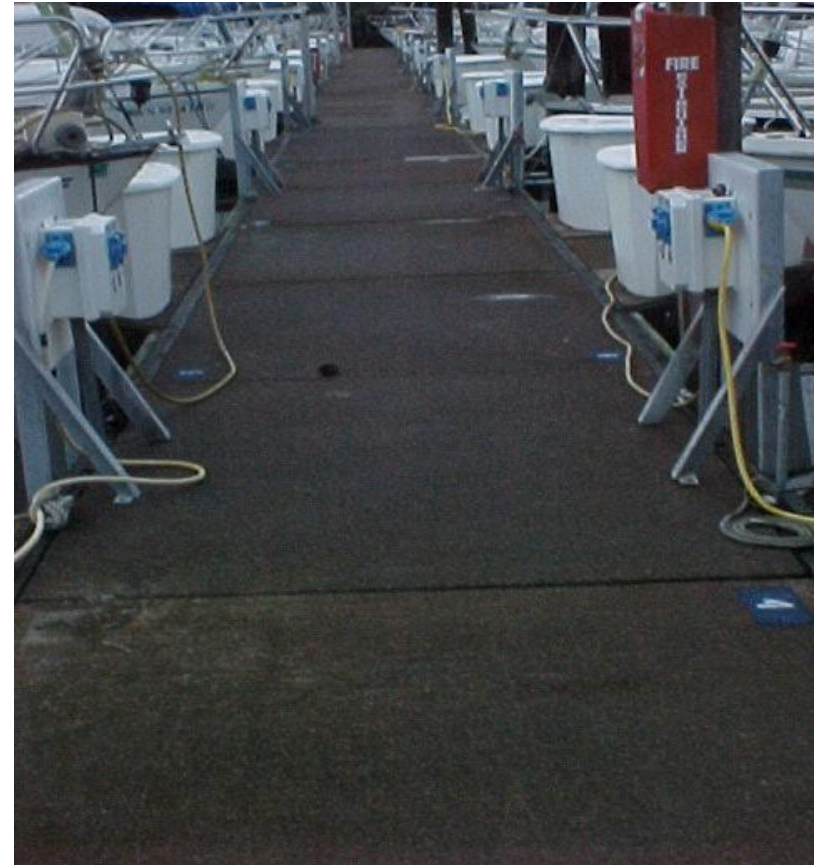
EXISTING CONDITIONS



TRENDS IN RECREATIONAL BOATING

- Demand for small slips is declining
- Demand for dry sheds remains low
- Dry stack units are becoming more popular

MASTER PLAN PROCESS



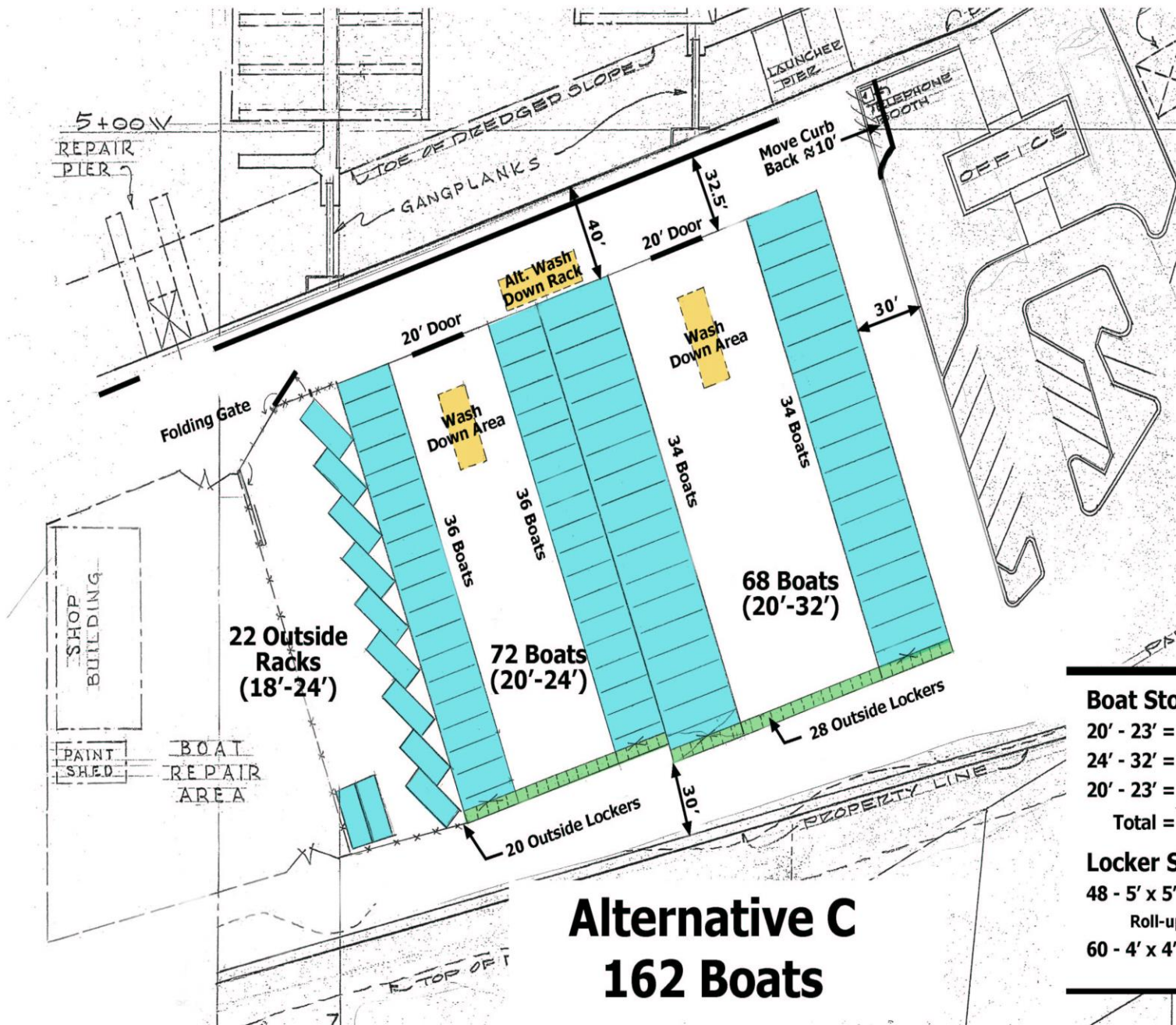
MASTER PLAN PROCESS

MASTER PLAN PROCESS

- 1996 SNOWSTORM
- CHANGES IN LOCAL BUILDING CODES – INCREASED ROOF LOADS
- EXISTING ROOFS NO LONGER MEET CODES

MASTER PLAN PROCESS

- PROBLEMS:
 - DECLINING DEMAND FOR 20 & 24 FT. SLIPS
 - GENERATING ENOUGH REVENUE TO RECOVER COSTS



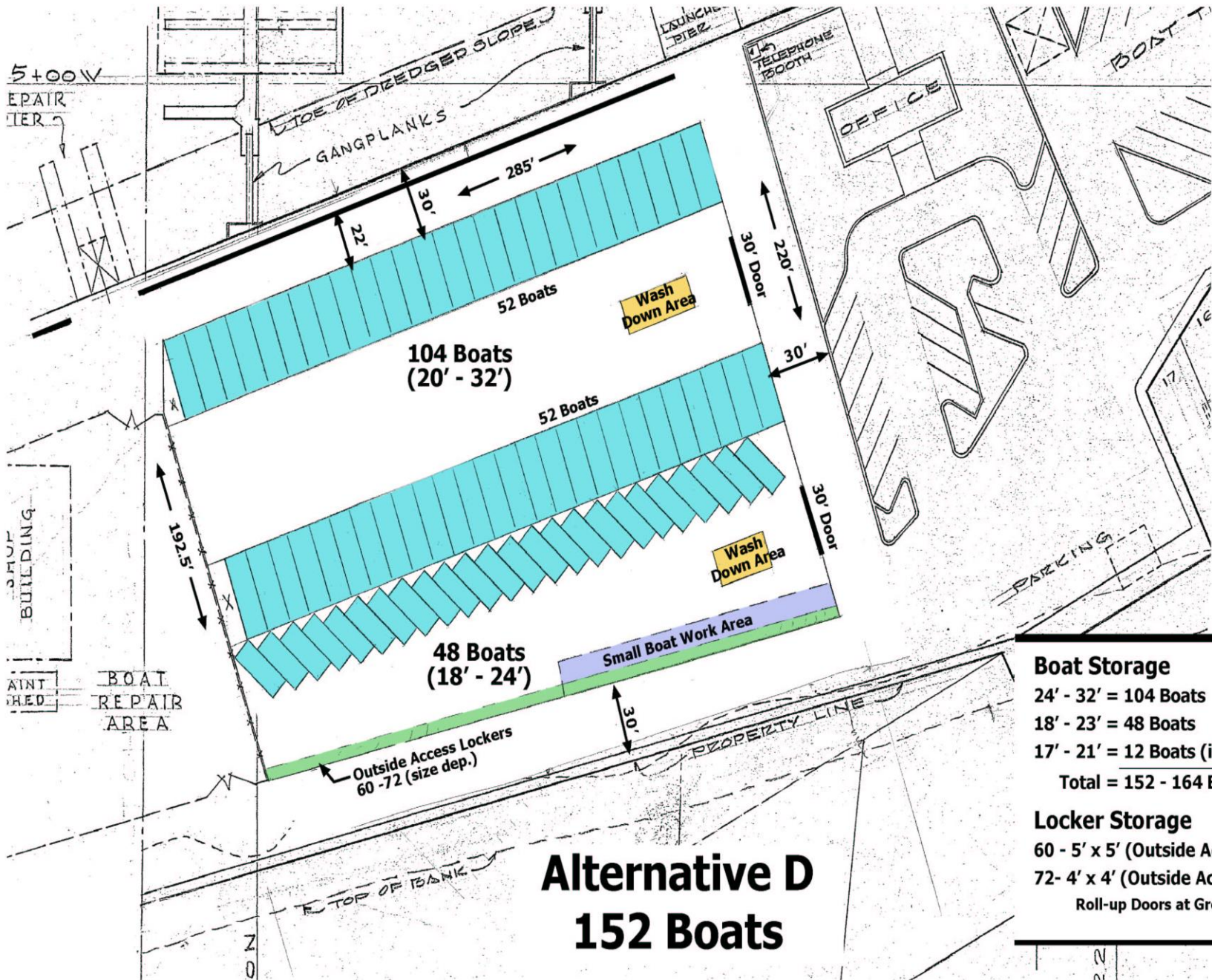
Alternative C 162 Boats

Boat Storage

- 20' - 23' = 72 Boats (Enclosed)
- 24' - 32' = 68 Boats (Enclosed)
- 20' - 23' = 22 Boats (Covered/Fenced)
- Total = 162 Boats**

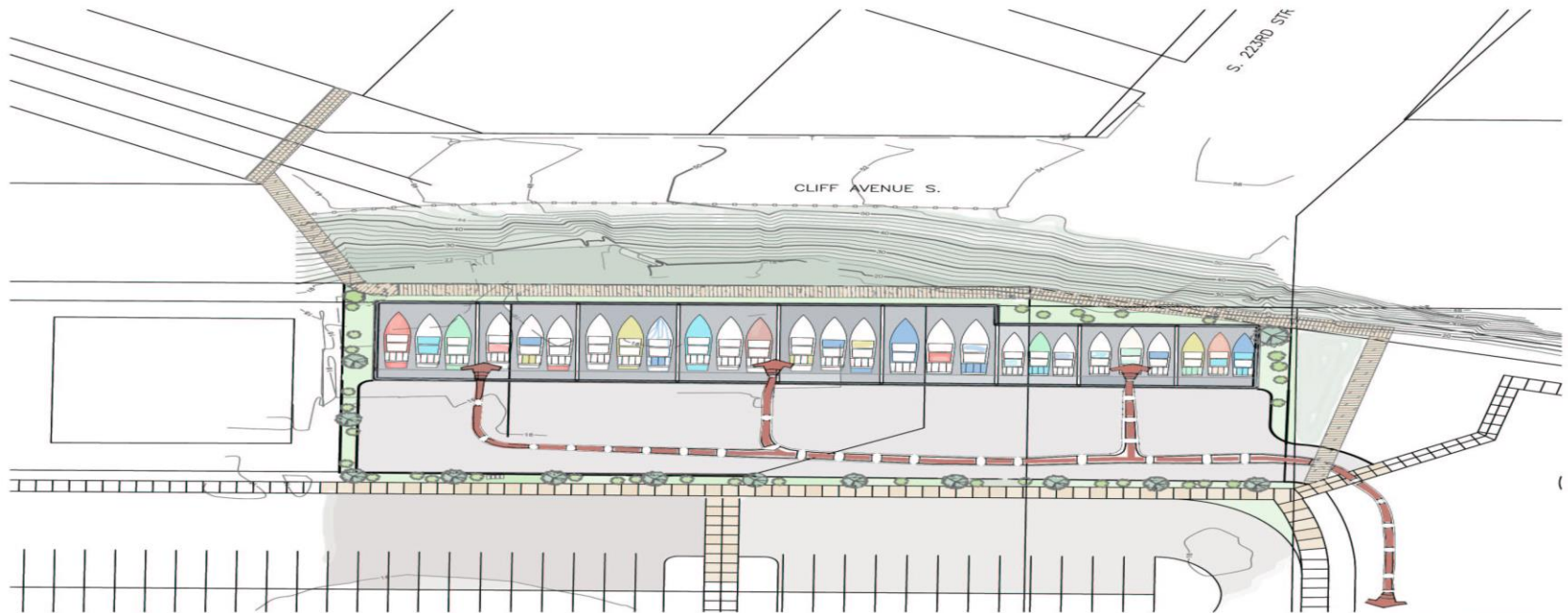
Locker Storage

- 48' - 5' x 5' (Outside Access Lockers)
- Roll-up Doors at Ground Level
- 60 - 4' x 4' (Outside Access Lockers)

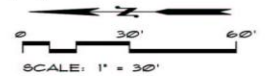


Alternative D 152 Boats

Boat Storage	
24' - 32'	= 104 Boats
18' - 23'	= 48 Boats
17' - 21'	= 12 Boats (if Triple Stacked)
Total = 152 - 164 Boats	
Locker Storage	
60 - 5' x 5'	(Outside Access Lockers)
72 - 4' x 4'	(Outside Access Lockers)
Roll-up Doors at Ground Level	



site plan



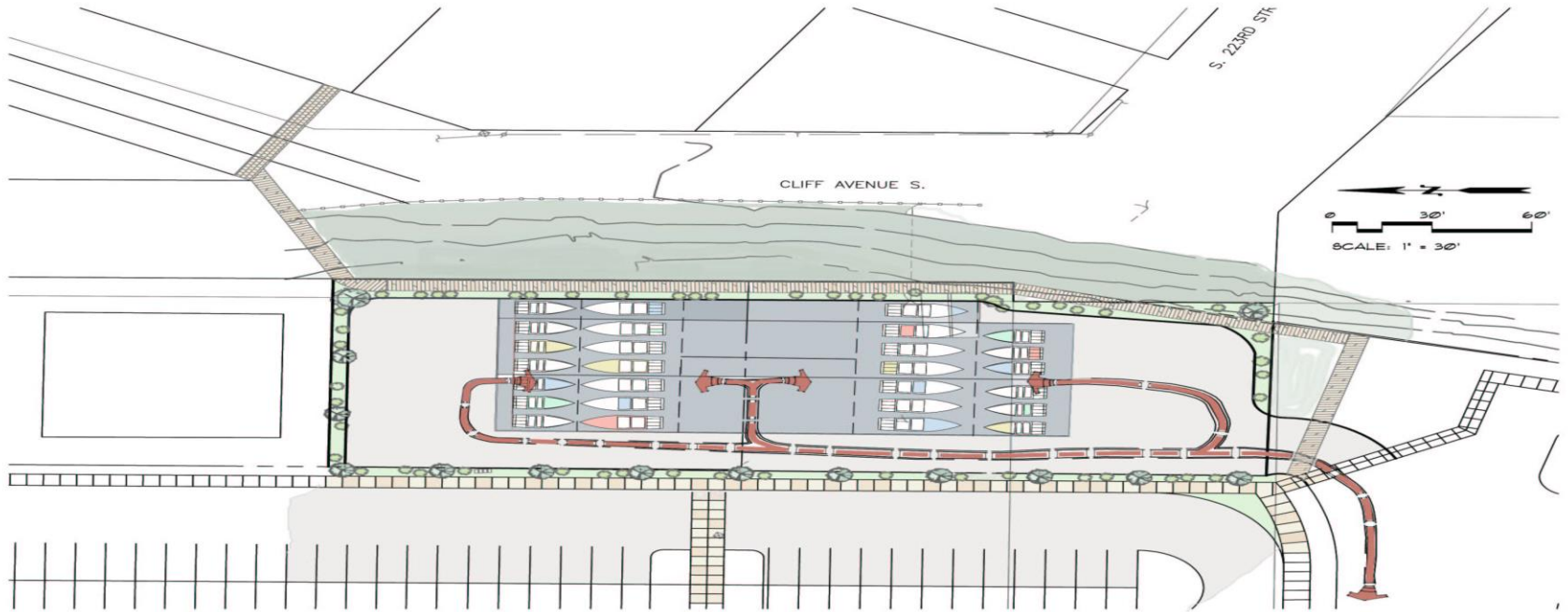
elevation — front



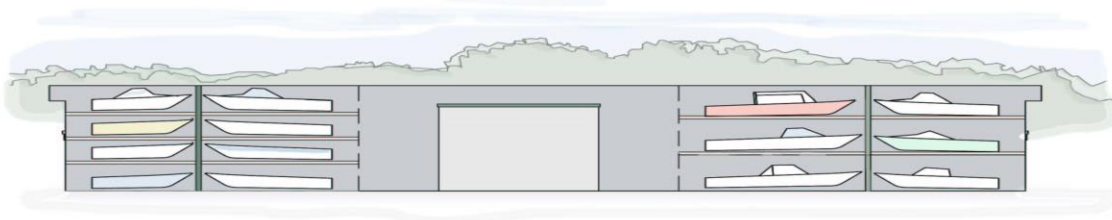
elevation — side

DRY STACK BOAT INVENTORY - CONCEPT A		
< 24'	< 32'	TOTAL
36	72	108 BOATS

NOTE: ROOF & CLADDING REMOVED FOR CLARITY



site plan
scale: 1" = 30'



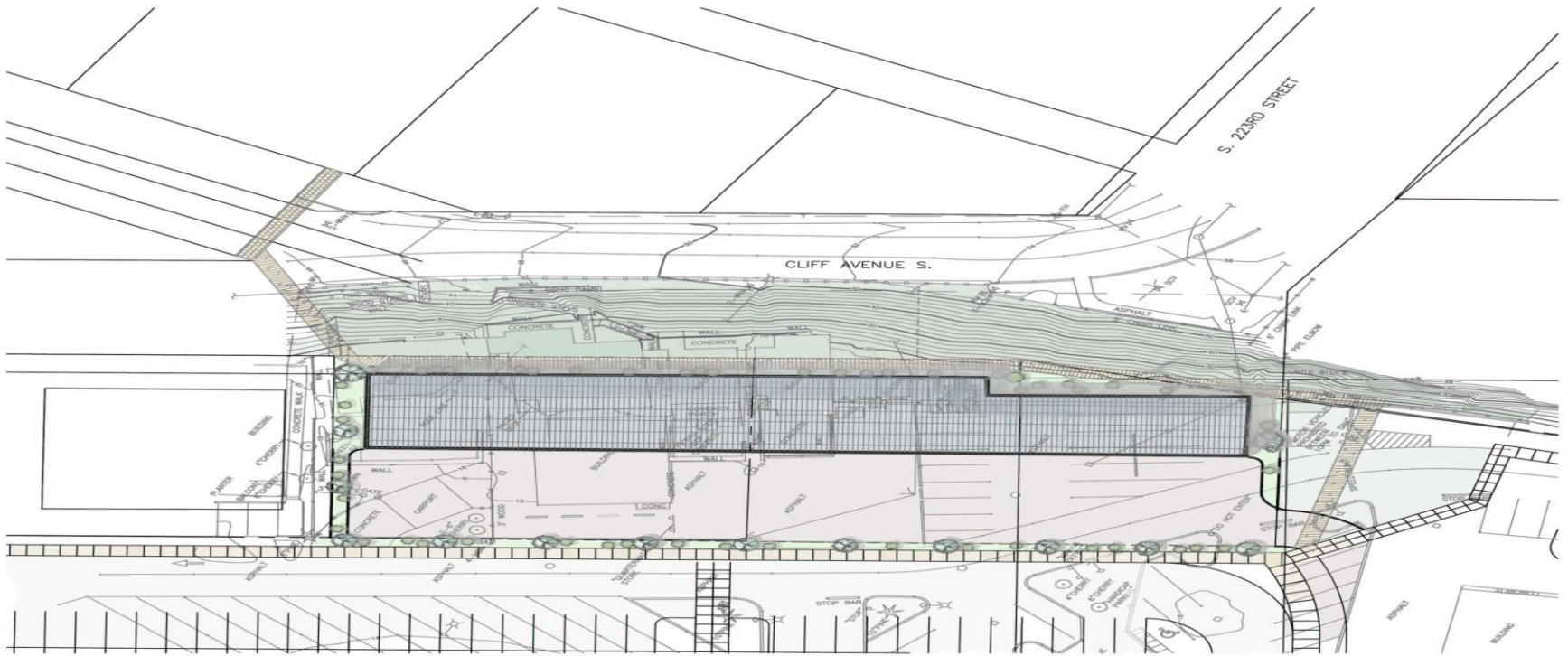
elevation — front
scale: 1" = 20'



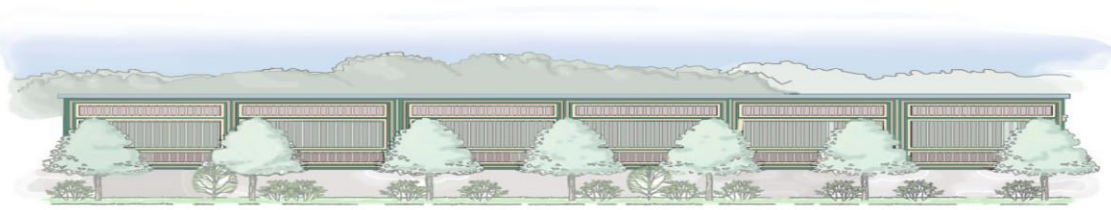
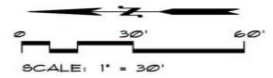
elevation — side
scale: 1" = 20'

<u>DRY STACK BOAT INVENTORY - CONCEPT B</u>				
<u>< 24'</u>	<u>< 28'</u>	<u>< 32'</u>	<u>TOTAL</u>	
28	49	18	95 BOATS	

NOTE: ROOF & CLADDING
REMOVED FOR CLARITY



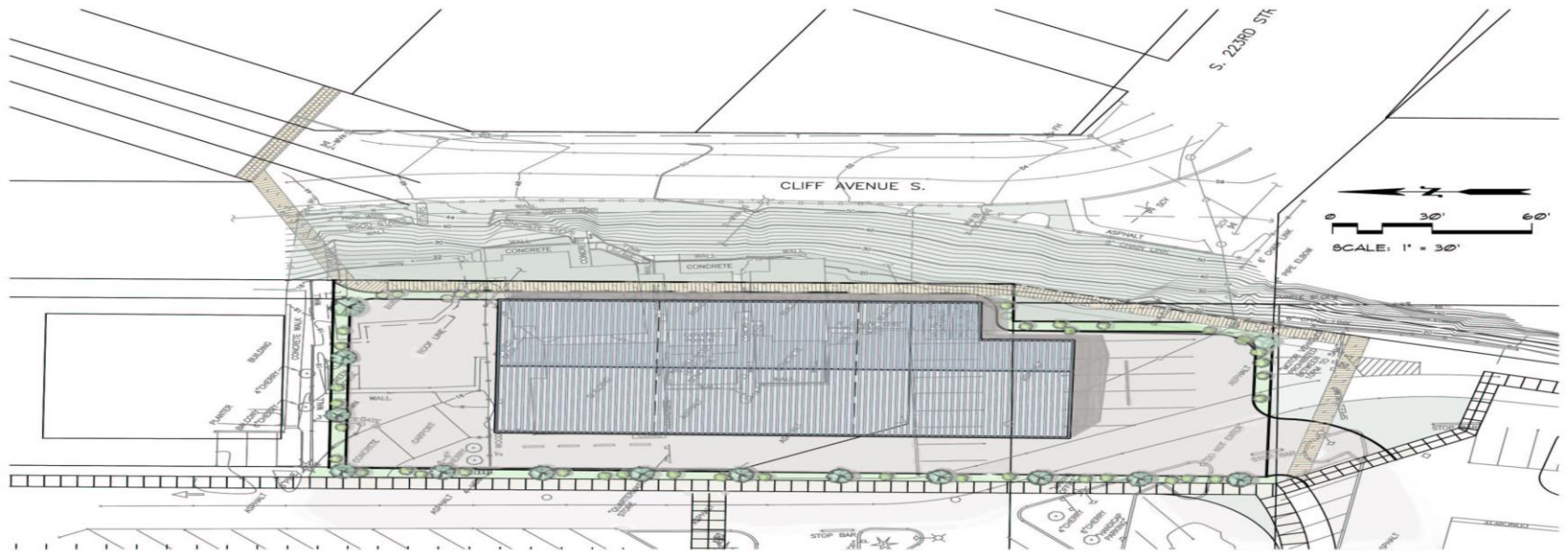
site plan



elevation — front



elevation — side



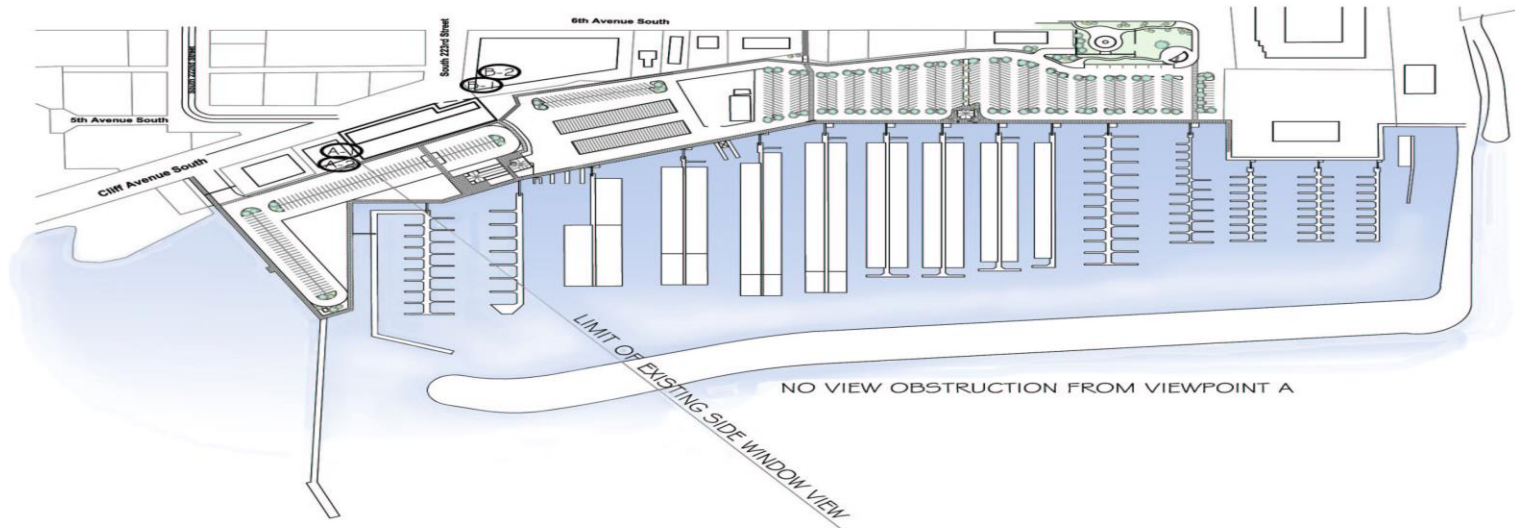
site plan
scale: 1" = 30'



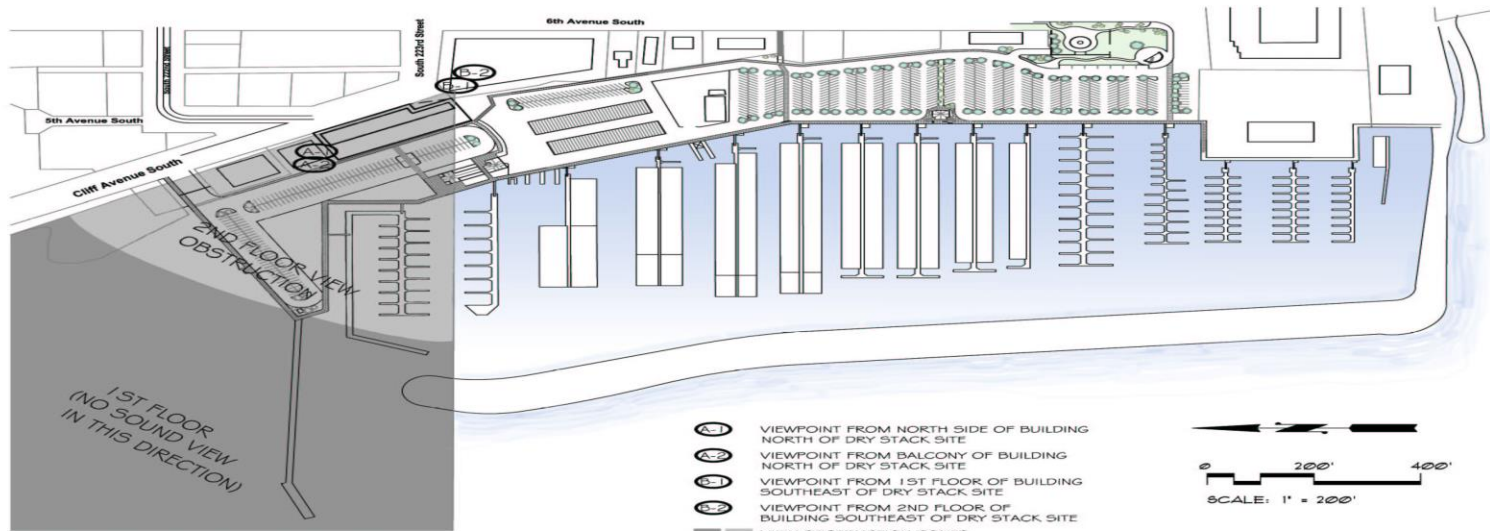
elevation — front
scale: 1" = 20'



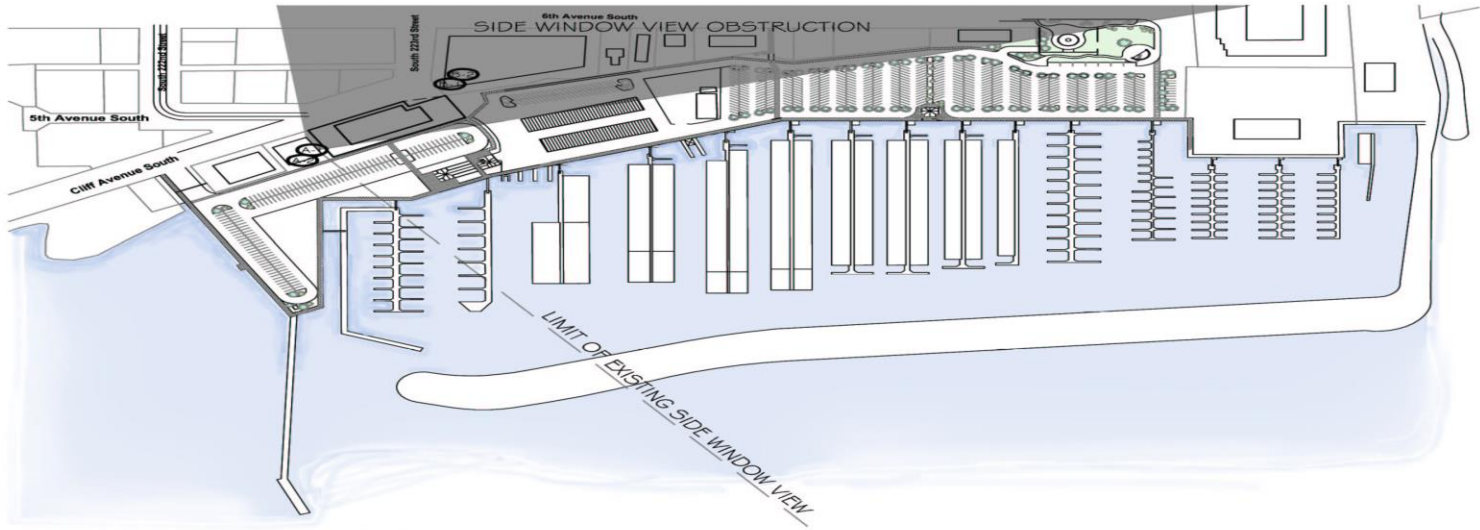
elevation — side
scale: 1" = 20'



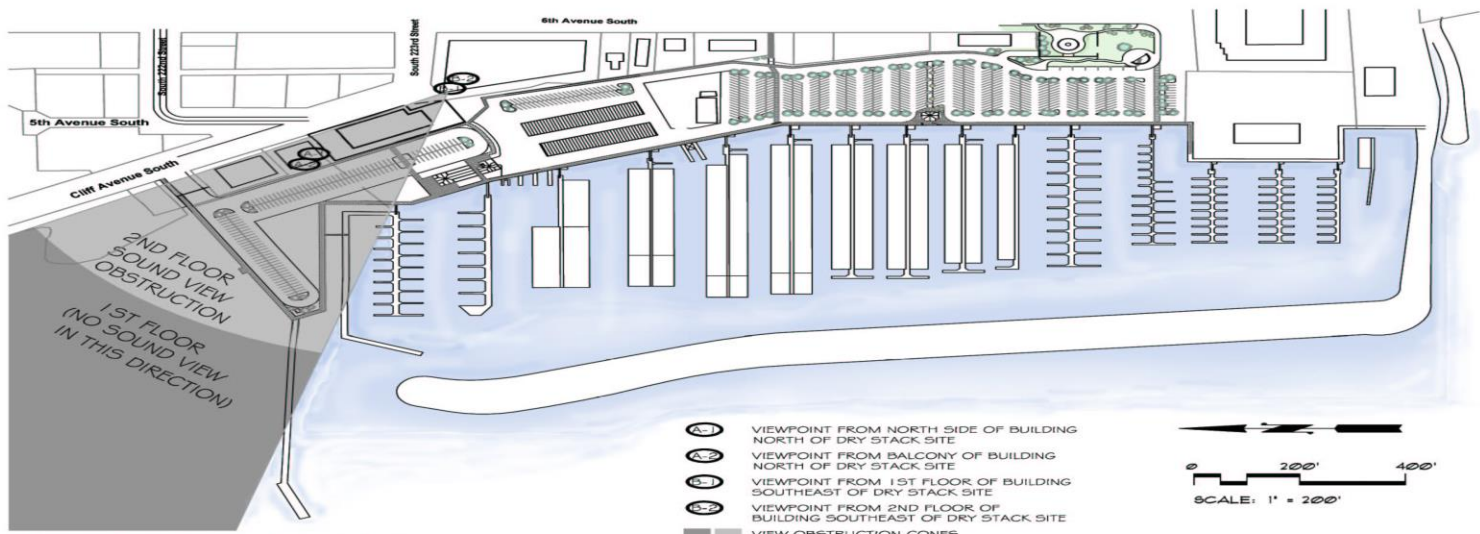
plan: view from viewpoint A



plan: view from viewpoint B



plan: view from viewpoint A



plan: view from viewpoint B